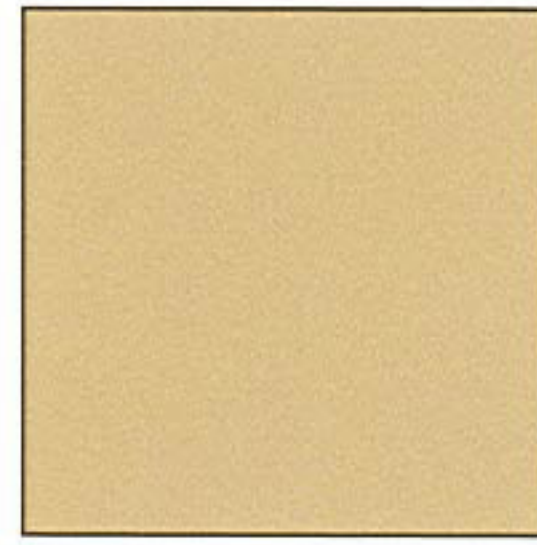


All L&T Shelving is painted with a tough, long lasting enamel finish to ensure years of lasting beauty. Choose from the finishes below.

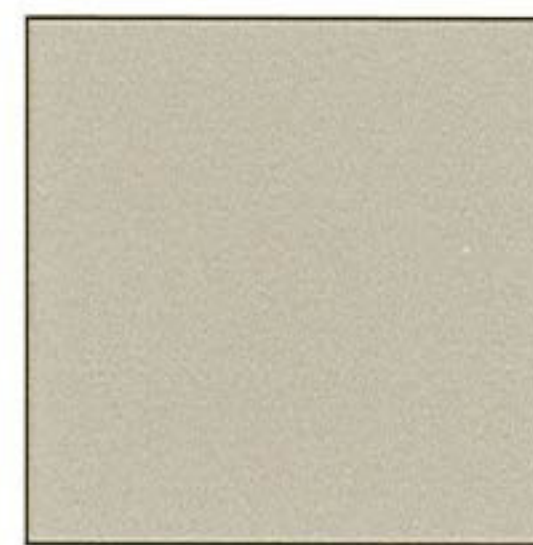
In-Stock Colors

Product in the following colors is in-stock and available for shipment within 48 hours.

48 Hour Shipment!



Sand



Light Grey

Standard Colors

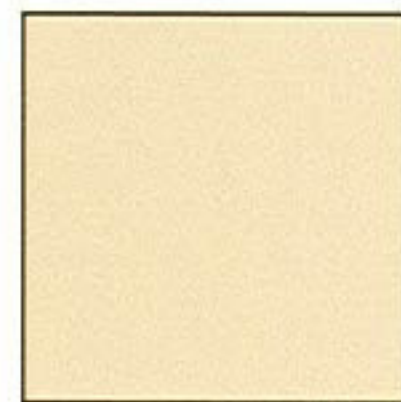
Products are available in the broad range of colors shown below without upcharge, at regular production lead times.



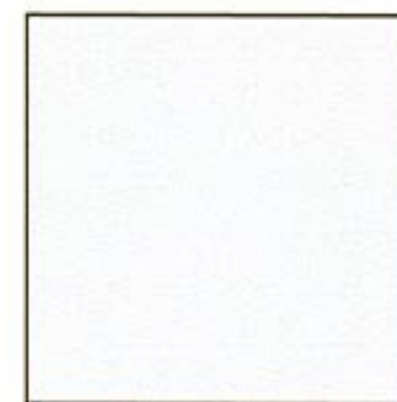
Black



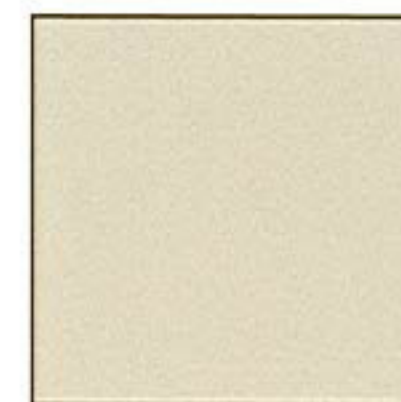
Medium Grey



Champagne/ Putty



Arctic White



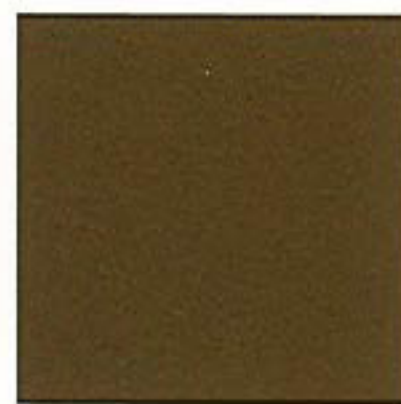
Oyster



Teal



Cloud Blue



Cocoa



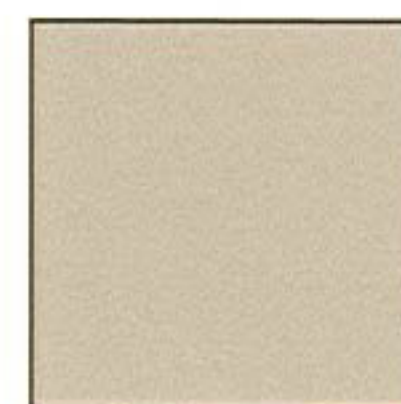
Buff



Wine



Ocean



Gray Mist



Pebble Tan

Custom Colors

Product can be ordered in colors custom matched to specific requirements. Special color matches are available on extended lead times, at a nominal upcharge.



The colors illustrated above are representative of the actual paint colors. If greater color accuracy is required, contact your dealer for a metal sample painted in the color being considered

Click on next page to see custom color upcharges for your specific product.

Click on next page to see custom color upcharges for your specific product. The upcharges vary between products so click to see your upcharge for special color options.

PRODUCT COLOR SELECTOR

PRODUCT LINE	L&T • B&B L&T DRAWER SYSTEM	Z-LINE	CLASSIC STAK
Direct Line Stocked Colors	Sand Light Grey	N/A	
Production Lead Time Colors No Upcharge (4-6 weeks)	Champagne/Putty Medium Grey Black Arctic White Cloud Blue Oyster Teal Wine Cocoa Buff Ocean Pebble Tan Grey Mist	Light Grey Medium Grey Sand	Sand (special lead time: 1 week -only for 36" letter) Light Grey (special lead time: 1 week- only for 36" letter) Black Dove Grey Bone White
Premium \$100 + 10%	Accent Blue Dove Grey	Champagne/Putty Black Accent Blue Arctic White Cloud Blue Dove Grey Oyster Teal Wine	Champagne/Putty Medium Grey Accent Blue Arctic White Cloud Blue Oyster Teal Wine
Custom Match \$400 + 15%	Call Direct Line 1-800-822-4000 for special requirements on custom colors.		